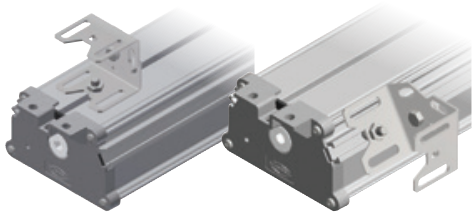




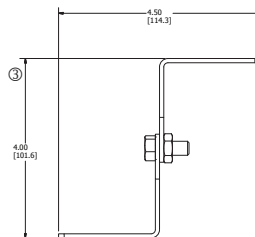
ACCESSORIES AND REPLACEMENT PARTS

ACCESSORIES AND REPLACEMENT PARTS: ① ②	
LAL-SB	Swivel Bracket Set w/ Adjustable Height; includes 5/16" bolts/nuts/lock-washers for attachment to LAL(C) "slots"; can also be attached to end cap mounting feet with FBO bolts.
LZCB	Ceiling Bracket Set with Stainless Steel Bolts to attach to LAL(C) "slots"
LZWB	Wall Bracket Set with Stainless Steel Bolts to attach to LAL(C) "slots"
LAL-BC	Steel/malleable Iron with Zinc electroplate for corrosion resistance; includes Stainless Steel Bolts to attach to LAL(C) "slots"
LAL-EB	Eyebolt Set with Stainless Steel Bolts to attach to LAL(C) "slots"
LAL-SSC	4' Stainless Safety Cable Loop/Loop Spring Safety Carabiner Hook
LALG	Stainless Guard for 1 LAL Lens, order two for 2 lens models
LALCG	LALC Stainless Guard
LAL-LENSCLR	Single Clear Lens with Gasket for LAL Series
LAL-LENSDIF	Single Diffuse Lens with Gasket for LAL Series
LALC-LENSCLR	Single Clear Lens with Gasket for LALC Series
LALC-LENSDIF	Single Diffuse Lens with Gasket for LALC Series
LAL-RIG-CB	Rig Mounting Style Ceiling Bracket
LAL-RIG-WB	Rig Mounting Style Wall Bracket

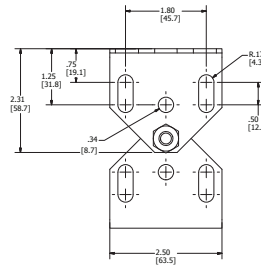


LAL-SB on Center Slot

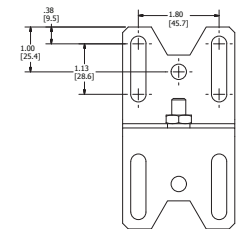
LAL-SB on 45° Slot



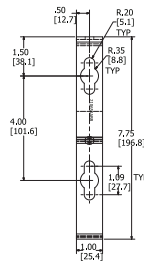
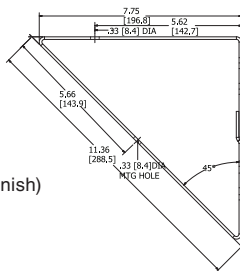
LAL-SB Dimensions – extended shown



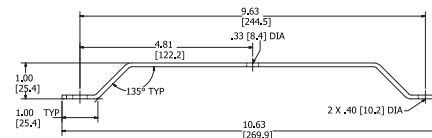
③ Un-extended height 3.25" (82.6)



Wall Bracket Set^②
Part Number LZWB
Stainless Steel (natural finish)

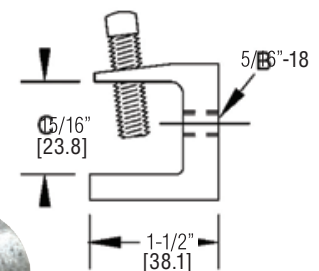
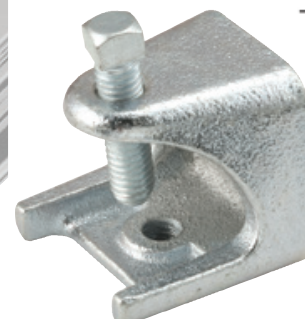
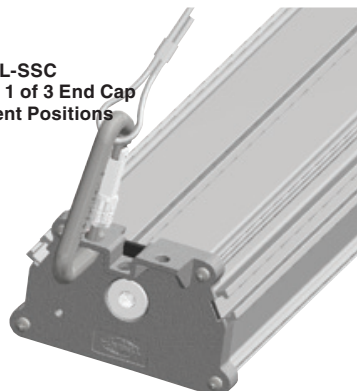


Ceiling Bracket Set^②
Part Number LZCB
Stainless Steel (natural finish)



LAL-SSC Safety Cable

LAL-SSC Attached to 1 of 3 End Cap Attachment Positions



LAL-BC Beam Clamp

① Dimensions in () are millimeters.

② Product accessories have hardware for attachment to fixture; hardware to attach to wall/ceiling F.B.O.